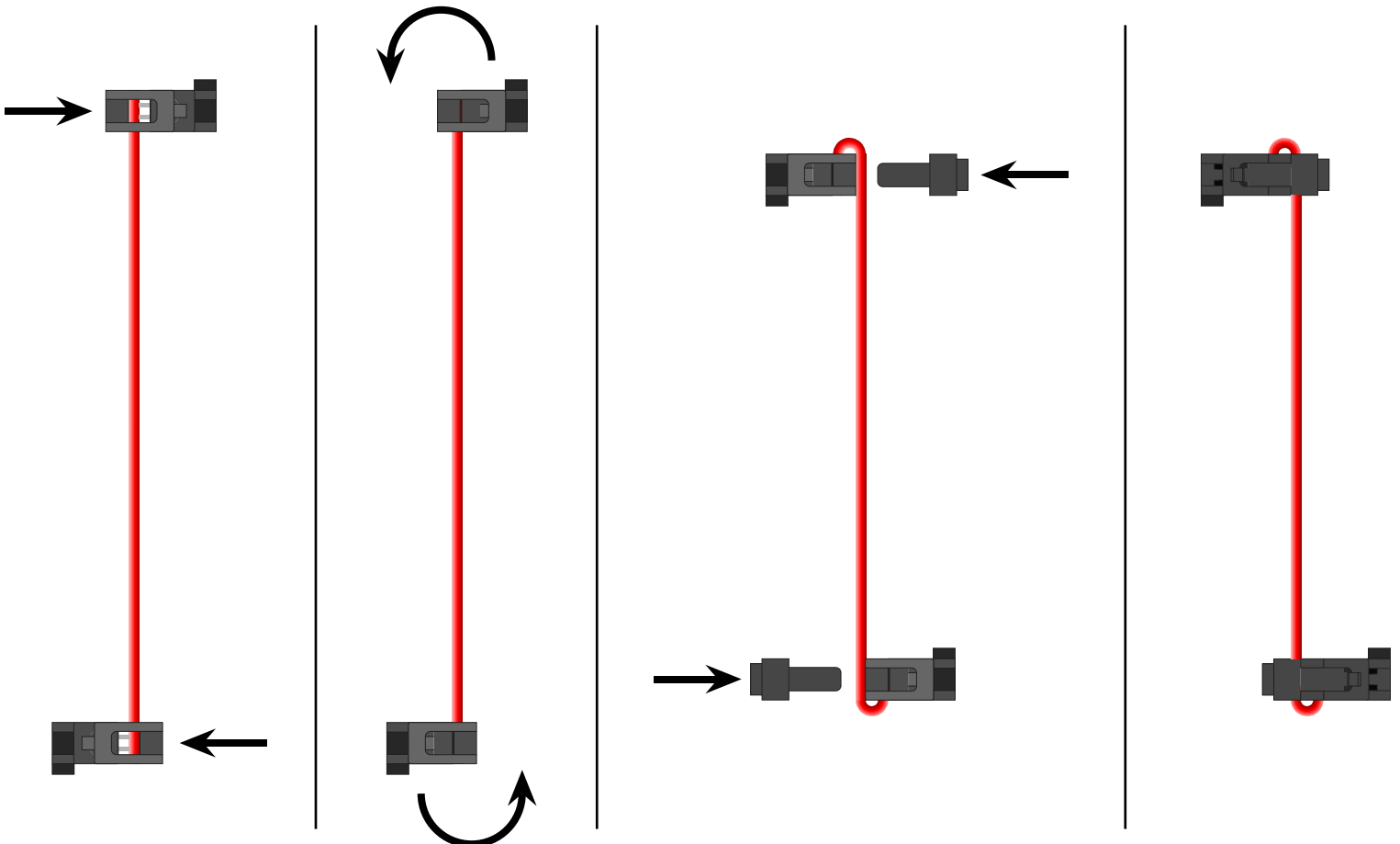


Part	Value	Qty	Package	Manufacturer	Manufacturer PN	Description
IC1	TL082	1	SO8	STMicro	TL082CDT	TL082 Dual op-amp
Q1, Q2, Q3, Q5	MMBT3904	4	SOT-23-3	Fairchild	MMBT3904LT1G	NPN Transistor
Q4	MMBT3906	1	SOT-23-3	Fairchild	MMBT3906LT1G	PNP transistor
C4	10pF	1	0805	AVX	08055A100CAT2A	MLCC, SMT
C2, C3	0.01uF	2	C050-025X075	Kemet	R82MC2100Z350J	Plastic film box capacitor, radial 5mm LS, Bulk, 17mm Lead length
C11	0.01uF	1	0805	Kemet	C0805C103K3RACTU	MLCC, SMT
C5, C8, C9, C10	0.1uF	4	0805	Kemet	C0805C104K3RACTU	MLCC, SMT
C1	2.2uF	1	C050-075X075	Kemet	R82CC4220DQ70J	Plastic film box capacitor, radial 5mm LS, Ammo Pak, 18.5mm Lead length
C6, C12	4.7uF	2	B	CDE	AVE475M25B12T-F	Aluminum electrolytic capacitor, SMT
C7, C13	10uF	2	B	Panasonic	EEE-FK1V100UR	Aluminum electrolytic capacitor, SMT
R21, R24	1k	2	0805	Vishay	CRCW08051K00FKTA	SMT 0.125W thick film resistor
R18	2k	1	0805	Vishay	CRCW08052K00FKTA	SMT 0.125W thick film resistor
R5, R6, R8, R12, R13, R22	10k	6	0805	Vishay	CRCW080510K0FKTA	SMT 0.125W thick film resistor
R7, R10	15k	2	0805	Vishay	CRCW080515K0FKTA	SMT 0.125W thick film resistor
R1, R2	47k	2	0805	Vishay	CRCW080547K0FKTA	SMT 0.125W thick film resistor
R16	49k9	1	0805	Vishay	CRCW080549K9FKTA	SMT 0.125W thick film resistor
R11, R14, R19, R20	100k	4	0805	Vishay	CRCW0805100KFKTA	SMT 0.125W thick film resistor
R15	200k	1	0805	Vishay	CRCW0805200KFKTA	SMT 0.125W thick film resistor
R4, R9, R23	1M	3	0805	Vishay	CRCW08051M00FKTB	SMT 0.125W thick film resistor
R3, R17	1M2	2	0805	Vishay	CRCW08051M21FKTA	SMT 0.125W thick film resistor
GAIN	B100k	1		Alpha	RD901F-40B1-15FW-B100K	Thonk: VERTICAL: B100K – Linear - D shaft
HIGH, INPUT	A100k	2		Alpha	RD901F-40B1-15FW-A100K	Thonk: VERTICAL: A100K – 100K Audio - D shaft
LOW	A1M	1		Alpha	RD901F-40B1-15FW-A1M	Thonk: VERTICAL: A1M – 1M Audio - D shaft
SW101		1		E-Switch	EG2301A	DP3T Slide switch
GAINCV, HIGHCV, IN1, IN2, LOWCV, OUT1, OUT2		7		Thonk	PJ301M-12	3.5mm mono phone jack PCB mount
PWR-E		1		3M	30310-6002HB	5x2 Shrouded box header
Knob		4		Re'an	P670-S-02-S6	16mm Soft Touch Knob with Red Pointer (T-18, but fits 6mm D-shaft)
INJP1, INJP2, OUTJP1, OUTJP2	100k	4		KOA	MFS1/4DC1003F	Metal film .25W TH resistor L: 3.2mm x D: 1.7mm
PCB		1				
Panel		1				

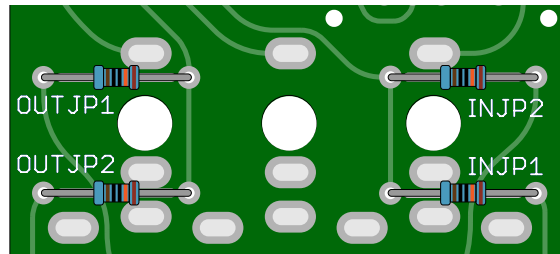


## BEFORE INSTALLING THE JACKS

The Output and Input jacks can be connected as multiples (not isolated) or summing (isolated).

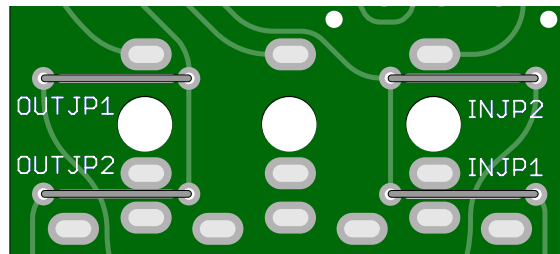
### Summing:

On the rear side of the PCB, insert the 100k leaded resistors in the positions marked INJP1, INJP2, OUTJP1, OUTJP2.



### Multiples:

Same as with Summing, but use a piece of wire (just cut the leads off two of the resistors) instead of the resistors.



## AFTER SOLDERING

On the front side of the PCB, trim the leads flush with the board surface, as they are directly underneath two of the jacks. Excessive length may cause short-circuiting and may cause the jack itself to sit unevenly. Yeah, yeah, a bit of a kludge, I know, but they didn't really fit anywhere else.